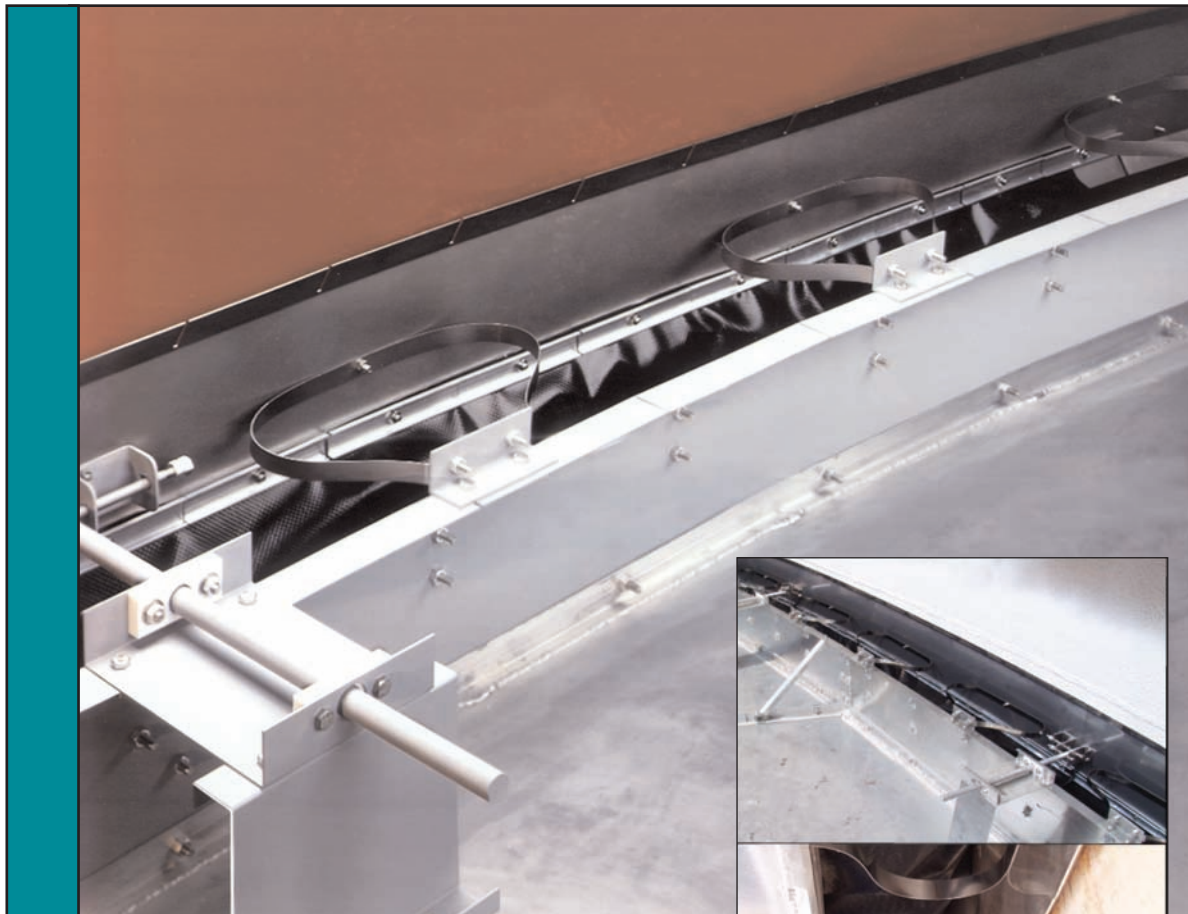


# ALLENTECH DOUBLE SHOE SEALS FOR INTERNAL FLOATING ROOFS

DESIGNED FOR MAXIMUM SEALING EFFICIENCY AND LONG TERM VALUE



The ALLENTECH double stainless steel shoe seal serves customer demands for keeping tanks in service by avoiding seal replacement, providing operating service flexibility and maximizing tank operating capacity. All materials are selected to withstand harsh chemical and environmental conditions, with a twenty year life expectancy. Metallic components are corrosion resistant stainless steel and aluminum. Components in contact with the tank shell are stainless steel. Standard vapor barrier fabric is resistant to most petrochemicals. The low profile secondary shoe seal minimizes capacity loss as compared to other non-elastomeric secondary seals.

- Double shoe seal (shown) exceeds current U.S. EPA requirements.
- Our primary shoe seal is available without a secondary seal to meet current U.S. EPA requirements.
- Our secondary shoe seal can be retrofitted above most existing primary seals.

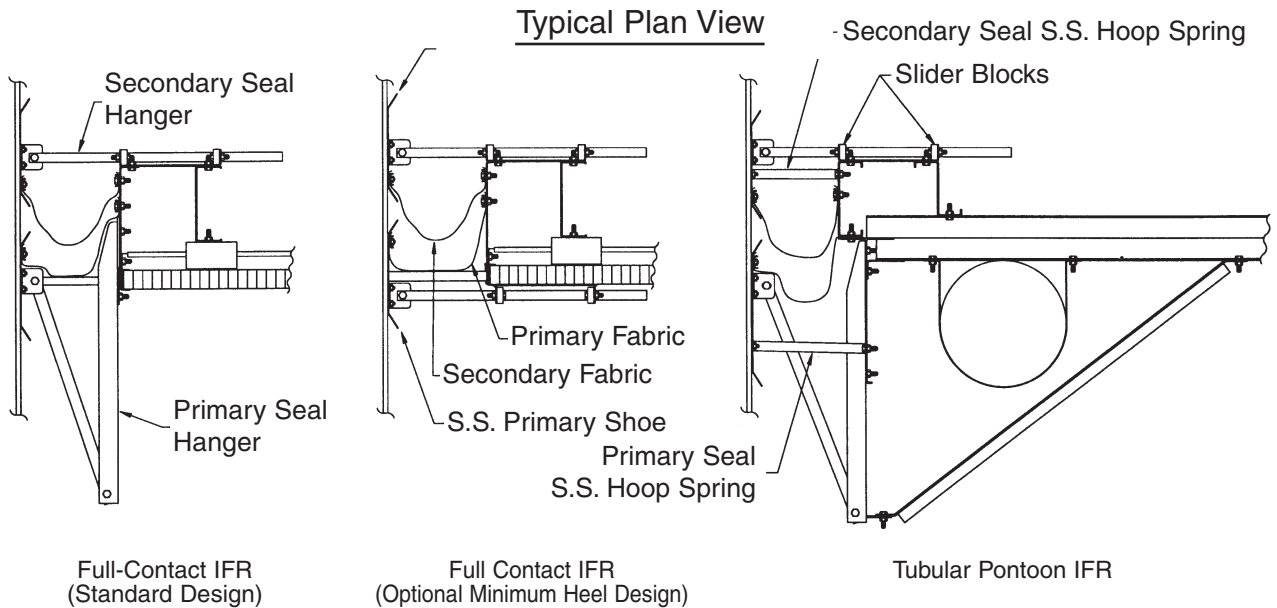
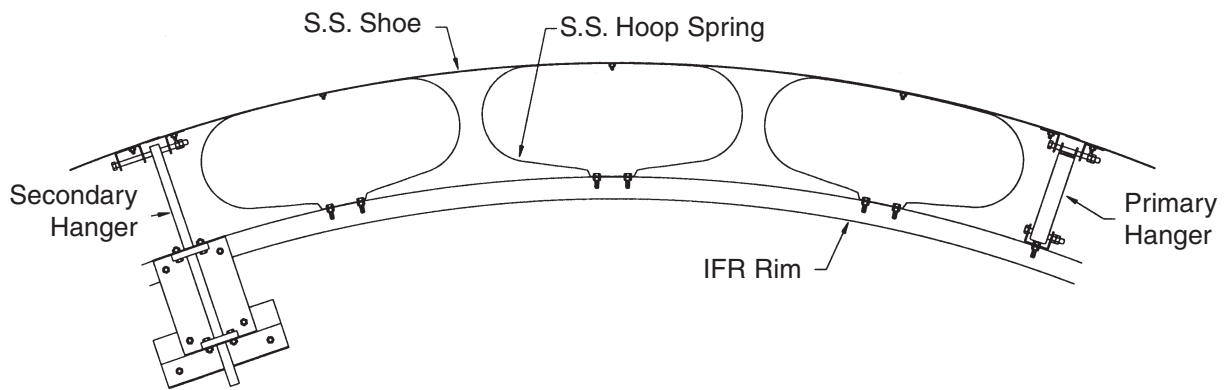
Protected by U.S. and Foreign Patents



# ALLENTECH DOUBLE SHOE SEALS FOR INTERNAL FLOATING ROOFS DESIGNED FOR MAXIMUM SEALING EFFICIENCY AND LONG TERM VALUE

Feature	Benefit
No elastomeric tip	Provides maximum durability and long life.
Stainless steel shoes, aluminum hangers and brackets	Compatible with most products. Fasteners are corrosion resistant stainless steel and aluminum.
Patented stainless steel hoop springs	Maximum shoe movement without varying the spring pressure. Springs press against the shoes in a long line, eliminating point contact and wear.
Light weight, flexible design	Most IFRs can be retrofitted with an ALLENTECH primary or double shoe seal system.
Springs bolt securely to both the shoes and the IFR	Provides positive static bonding every two feet, beneath the liquid level (primary) and above the vapor space (secondary).
S.S. studs welded to the shoes	No through holes that promote corrosion and increase shell friction.

**ALLENTECH is proud to be your partner in developing long-lasting, cost effective products.**



ALLENTECH's innovative, proven designs are accepted worldwide as superior components.  
ALLENTECH's expertise provides clear-cut solutions for all floating roof applications.